

# FOREWORD

Welcome to Te Taumata Poll Hereford's 25th Annual Bull Sale. We are pleased to present to you a top-line of well-grown bulls with the genetics to increase production in your herd.

At Te Taumata we strive to produce moderate framed cattle with superior growth rate and fleshing with strict attention paid to milking ability and calving ease. Over the past 20 years we have used top genetics in our herd from Australia, Canada and the USA, along with the very best homebred sires. This policy is now showing tremendous results throughout our breeding programme.

We also maintain a top Border Leicester Sheep Stud, which was established in 1958 and a Romney Sheep Stud established in 1962. We would be pleased at any time to show you our line-up of ram hoggets, which will be for sale in November.

Inspections prior to sale day are always welcome. Please feel free to ring if you have any queries. We look forward to seeing you on the 9th of June.

Jim and Alistair McWilliam

Tel: Jim at 06 372 7718 or Alistair at 06 372 7861

Email: [studstock@mcwilliamtetaumata.co.nz](mailto:studstock@mcwilliamtetaumata.co.nz)



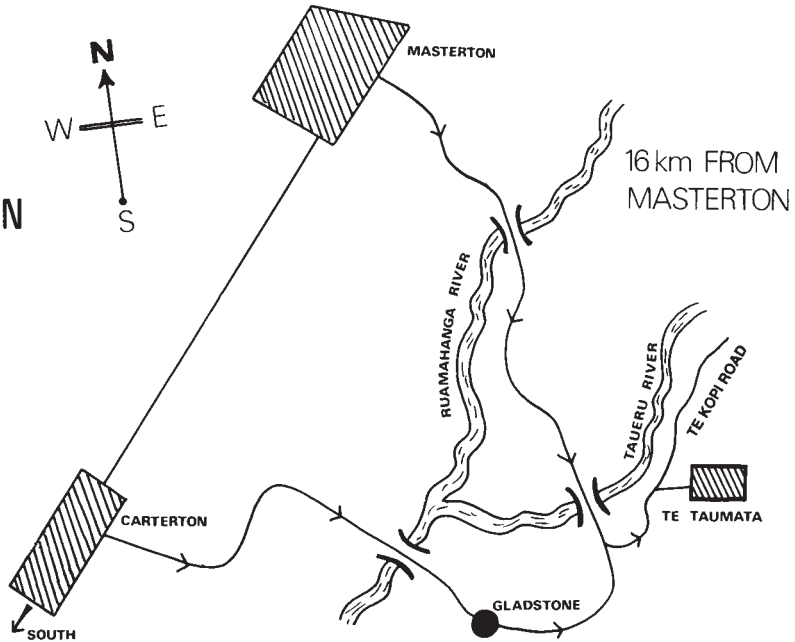
## **CONDITIONS OF SALE**

1. The sale will be conducted under the usual terms and conditions of the Wairarapa Stock and Station Agent's Association.
2. Each lot shall become the property of the purchaser at the fall of the hammer. Purchasers are advised to insure cattle prior to transit and for six months.
3. All bulls must be uplifted by 24 June 2004.
4. Although all care has been taken in compiling this catalogue, no responsibility will be taken for any errors or omissions thereof. All lots are open for inspection prior to the commencement of the sale; the same are sold with all faults, if any. No compensation shall be made in respect of any fault or error of description of any lots; however, the vendor reserves the right to make compensation to a buyer if it is the vendor's wish.
5. Fertility guarantee. As per rules and regulations set down by The New Zealand Hereford Association.
6. Transfers by arrangement. All bulls eligible for transfer.
7. All persons who attend the Sale do so at their own risk. McWilliam Stud Stock assume no liability, legal or otherwise, for any accidents which may occur.

## **GENERAL INFORMATION**

1. All bulls TB and Brucellosis accredited.
2. All cattle have been reared on their own mothers and stand on sound feet.
3. Please bring this catalogue to the Sale.
4. All cattle recorded with The New Zealand Hereford Association.
5. FREE delivery of bulls if uplifted by 17 June.
6. All Bulls service and semen quality tested and scanned for carcase traits.

# LOCATION



# TE TAUMATA THUNDER 03737

## 2005 GROUP BREEDPLAN EBVs

|          | Birth Wt. | Milk | 200 Day Gro. | 400 Day Gro. | 600 Day Gro. | Rib | Rump | EMA | Carcase Wt. |
|----------|-----------|------|--------------|--------------|--------------|-----|------|-----|-------------|
| E.B.V.   | 5.1       | 9.0  | 35.0         | 54.0         | 71.0         | 0.0 | -0.2 | 1.3 | 42.0        |
| Accuracy | 73%       | 44%  | 68%          | 65%          | 66%          | 49% | 49%  | 42% | 55%         |

KLONDIKE 707B 15D

4K KFF KAZZ

4K ST CORNUCOPIA 4W

**SIRE:** TE TAUMATA PRESTIGE

WLB REVELATION 67U 23B

TE TAUMATA MINERVA 35

TE TAUMATA MINERVA 21

GK SPORTSMAN 41Y

4K SURVIVOR (IMP USA)

GK MADAME EX 623B

**DAM:** TE TAUMATA DIANA 180

TE TAUMATA CHARLES

TE TAUMATA DIANA 160

TE TAUMATA DIANA 91



**FOR SALE AT 2005 NZ BEEF EXPO, PALMERSTON NORTH**

## SALE BULL INDEX

| LOT NO. | TAG NO. | LOT NO. | TAG NO. |
|---------|---------|---------|---------|
| 1       | 724     | 13      | 673     |
| 2       | 675     | 14      | 738     |
| 3       | 674     | 15      | 688     |
| 4       | 714     | 16      | 735     |
| 5       | 689     | 17      | 679     |
| 6       | 677     | 18      | 707     |
| 7       | 678     | 19      | 753     |
| 8       | 726     | 20      | 730     |
| 9       | 696     | 21      | 698     |
| 10      | 756     | 22      | 706     |
| 11      | 685     | 23      | 729     |
| 12      | 682     | 24      | 704     |

# REFERENCE SIRE

## TE TAUMATA PREMIER 00482

### 2005 GROUP BREEDPLAN EBVs

|          | Birth Wt. | Milk | 200 Day Gro. | 400 Day Gro. | 600 Day Gro. | Rib  | Rump | EMA | Carcase Wt. |
|----------|-----------|------|--------------|--------------|--------------|------|------|-----|-------------|
| E.B.V.   | 3.3       | 10.0 | 25.0         | 36.0         | 49.0         | -0.3 | -0.6 | 1.6 | 29          |
| Accuracy | 89%       | 57%  | 86%          | 84%          | 82%          | 63%  | 63%  | 54% | 72%         |

KLONDIKE 28U 707B  
 KLONDIKE 707B 15D  
 GK COSMOPOLITAN T32

**SIRE:** 4K KFF KAZZ

RB STAMANA 719U  
 4K ST CORNUCOPIA 4W  
 4K ENFORCER GOLD SUE

KILMORLIE DELIVERANCE 80U (ET)  
 TE TAUMATA EMPEROR  
 TE TAUMATA BELLE 7

**DAM:** TE TAUMATA BELLE 104

SNS GENERATOR 28X (IMP CAN)  
 TE TAUMATA BELLE 65  
 TE TAUMATA BELLE 37



Consistent producer of very thick, fast growing calves and superb females. Semen available for sale.

# YOUNG HERD SIRE

## TE TAUMATA SUPERSTAR 02616

### 2005 GROUP BREEDPLAN EBVs

|          | Birth Wt. | Milk | 200 Day Gro. | 400 Day Gro. | 600 Day Gro. |
|----------|-----------|------|--------------|--------------|--------------|
| E.B.V.   | 3.6       | 11.0 | 30.0         | 43.0         | 61.0         |
| Accuracy | 75%       | 47%  | 69%          | 67%          | 68%          |

KLONDIKE 707B 15D

4K KFF KAZZ

4K ST CORNUCOPIA 4W

**SIRE:** TE TAUMATA PREMIER

TE TAUMATA EMPEROR

TE TAUMATA BELLE 104

TE TAUMATA BELLE 65

TE TAUMATA EMPEROR

TE TAUMATA INQUEST N815

TE TAUMATA WILLDALE 71

**DAM:** TE TAUMATA BELLE 123

SNS GENERATOR 28X (IMP CAN)

TE TAUMATA BELLE 65

TE TAUMATA BELLE 37



Superstar is a very thick, easy fleshing bull with the performance, cosmetics and eye-appeal that makes him one of New Zealand's best up and coming young sires. His first calves fulfill all of our expectations of this truly magnificent young sire. Semen available for sale.

# TE TAUMATA TANGO 03724

## LOT 1

**BORN: 15 August 2003**

**Tag No.: 724**

### 2005 GROUP BREEDPLAN EBVs

|          | Birth Wt. | 200 Day Gro. | 400 Day Gro. | 600 Day Gro. | Milk | EMA | Rib | Rump | Carcase Wt. | Scrotal Circ. (cm) | Wt (kg) |
|----------|-----------|--------------|--------------|--------------|------|-----|-----|------|-------------|--------------------|---------|
| E.B.V.   | 3.1       | 24.0         | 44.0         | 56.0         | 8.0  | 1.4 | 0.1 | 0.0  | 33.0        |                    |         |
| Accuracy | 72%       | 67%          | 65%          | 67%          | 41%  | 44% | 52% | 52%  | 56%         | 37                 | 782     |

KLONDIKE 707B 15D

4K KFF KAZZ

4K ST CORNUCOPIA 4W

**SIRE:** TE TAUMATA PRESTIGE

WLB REVELATION 67U 23B

TE TAUMATA MINERVA 35

TE TAUMATA MINERVA 21

CIRCLE-D WRANGLER 832W

NJW CHARLIE RUSSELL 72F

CIRCLE-D 452M DUCHESS 537T

**DAM:** TE TAUMATA LEONORA 127

SMITHSTON MIGHTY MAC MO33

TE TAUMATA LEONORA 103

TE TAUMATA LEONORA 71



Comment: Tango is a very complete young bull with tremendous length and eye appeal. He's an up and coming stud sire and one of the youngest bulls in the catalogue. Birthweight EBV 3.1.

*Purchaser:* .....

*Price:* .....

# TE TAUMATA TEQUILA 03675

## LOT 2

BORN: 16 July 2003

Tag No.: 675

### 2005 GROUP BREEDPLAN EBVs

|          | Birth Wt. | 200 Day Gro. | 400 Day Gro. | 600 Day Gro. | Milk | EMA | Rib | Rump | Carcase Wt. | Scrotal Circ. (cm) | Wt (kg) |
|----------|-----------|--------------|--------------|--------------|------|-----|-----|------|-------------|--------------------|---------|
| E.B.V.   | 5.8       | 29.0         | 42.0         | 67.0         | 8.0  | 2.3 | 0.4 | 0.3  | 37.0        |                    |         |
| Accuracy | 73%       | 69%          | 67%          | 69%          | 42%  | 44% | 52% | 52%  | 56%         | 39                 | 828     |

GK SPORTSMAN 41Y

4K SURVIVOR

GK MADAME EX 623B

**SIRE:** TE TAUMATA ORLANDO U387

TE TAUMATA EMPEROR

TE TAUMATA WILLDALE 177

TE TAUMATA WILLDALE 133

FELTONS 517

GERBER GRANGER 113G

GK QUEEN TEN 782R

**DAM:** TE TAUMATA LYDIA 77

TE TAUMATA EMPEROR

TE TAUMATA LYDIA 67

TE TAUMATA LYDIA 59



Comment: Tequila is a big stylish bull sired by the 2001 NZ Beef Expo Hereford Champion, Te Taumata Orlando. He shows all of the characteristics of a top stud sire.

Purchaser: .....

Price: .....

# TE TAUMATA TAURUS 03674

## LOT 3

**BORN: 14 July 2003**

**Tag No.: 674**

### 2005 GROUP BREEDPLAN EBVs

|          | Birth Wt. | 200 Day Gro. | 400 Day Gro. | 600 Day Gro. | Milk | EMA | Rib | Rump | Carcass Wt. | Scrotal Circ. (cm) | Wt (kg) |
|----------|-----------|--------------|--------------|--------------|------|-----|-----|------|-------------|--------------------|---------|
| E.B.V.   | 5.8       | 24.0         | 37.0         | 57.0         | 4.0  | 1.5 | 0.3 | 0.2  | 30.0        |                    |         |
| Accuracy | 73%       | 69%          | 67%          | 69%          | 42%  | 44% | 52% | 52%  | 56%         | 40                 | 820     |

GK SPORTSMAN 41Y

4K SURVIVOR

GK MADAME EX 623B

**SIRE:** TE TAUMATA ORLANDO U387

TE TAUMATA EMPEROR

TE TAUMATA WILLDALE 177

TE TAUMATA WILLDALE 133

TE TAUMATA JASPER

TE TAUMATA LETHAL R85

TE TAUMATA LEONORA A98

**DAM:** TE TAUMATA BELLE 194

TE TAUMATA CAVALIER

TE TAUMATA BELLE 61

TE TAUMATA BELLE 38



Comment: A young bull with tremendous volume and strength.

*Purchaser:* .....

*Price:* .....

# TE TAUMATA TRISTRAM 03714

## LOT 4

**BORN: 08 August 2003**

**Tag No.: 714**

### 2005 GROUP BREEDPLAN EBVs

|          | Birth Wt. | 200 Day Gro. | 400 Day Gro. | 600 Day Gro. | Milk | EMA | Rib | Rump | Carcase Wt. | Scrotal Circ. (cm) | Wt (kg) |
|----------|-----------|--------------|--------------|--------------|------|-----|-----|------|-------------|--------------------|---------|
| E.B.V.   | 6.2       | 23.0         | 39.0         | 61.0         | 6.0  | 2.4 | 0.7 | 0.8  | 30.0        |                    |         |
| Accuracy | 73%       | 69%          | 67%          | 68%          | 40%  | 43% | 52% | 52%  | 56%         | 42                 | 802     |

GK SPORTSMAN 41Y

4K SURVIVOR

GK MADAME EX 623B

**SIRE:** TE TAUMATA ORLANDO U387

TE TAUMATA EMPEROR

TE TAUMATA WILLDALE 177

TE TAUMATA WILLDALE 133

SQUARE-D APPO TEC 664Y 790B

GHC HIGH TECH 30E

GHC 3R MISS WEST 6T

**DAM:** TE TAUMATA BELLE 191

TE TAUMATA KERANG Q982

TE TAUMATA BELLE 143

TE TAUMATA BELLE 92



Comment: An eye catching young sire with tremendous carcass EBVs.

*Purchaser:* .....

*Price:* .....

# TE TAUMATA TRENTON 03689

## LOT 5

**BORN: 22 July 2003**

**Tag No.: 689**

### 2005 GROUP BREEDPLAN EBVs

|          | Birth Wt. | 200 Day Gro. | 400 Day Gro. | 600 Day Gro. | Milk | EMA | Rib | Rump | Carcass Wt. | Scrotal Circ. (cm) | Wt (kg) |
|----------|-----------|--------------|--------------|--------------|------|-----|-----|------|-------------|--------------------|---------|
| E.B.V.   | 4.9       | 25.0         | 54.0         | 74.0         | 7.0  | 2.2 | 0.1 | 0.0  | 45.0        |                    |         |
| Accuracy | 71%       | 67%          | 64%          | 66%          | 39%  | 41% | 50% | 50%  | 53%         | 40                 | 820     |

KLONDIKE 707B 15D

4K KFF KAZZ

4K ST CORNUCOPIA 4W

**SIRE:** TE TAUMATA PATRIOT

TE TAUMATA EMPEROR

TE TAUMATA BELLE 105

TE TAUMATA BELLE 44

TE TAUMATA JASPER

TE TAUMATA LETHAL R85

TE TAUMATA LEONORA 98

**DAM:** TE TAUMATA LYNDA 54

KOANUI BONUS M226

TE TAUMATA LYNDA 42

TE TAUMATA LYNDA 27



Comment: Another top young sire by Te Taumata Orlando with excellent growth figures.

*Purchaser:* .....

*Price:* .....

# TE TAUMATA TITAN 03677

## LOT 6

**BORN: 18 July 2003**

**Tag No.: 677**

### 2005 GROUP BREEDPLAN EBVs

|          | Birth Wt. | 200 Day Gro. | 400 Day Gro. | 600 Day Gro. | Milk | EMA | Rib  | Rump | Carcase Wt. | Scrotal Circ. (cm) | Wt (kg) |
|----------|-----------|--------------|--------------|--------------|------|-----|------|------|-------------|--------------------|---------|
| E.B.V.   | 5.2       | 35.0         | 50.0         | 71.0         | 8.0  | 2.3 | -0.2 | -0.5 | 42.0        |                    |         |
| Accuracy | 74%       | 69%          | 66%          | 68%          | 44%  | 44% | 53%  | 53%  | 57%         | 38.5               | 826     |

KLONDIKE 707B 15D

4K KFF KAZZ

4K ST CORNUCOPIA 4W

**SIRE:** TE TAUMATA PREMIER

TE TAUMATA EMPEROR

TE TAUMATA BELLE 104

TE TAUMATA BELLE 65

GK SPORTSMAN 41Y

4K SURVIVOR

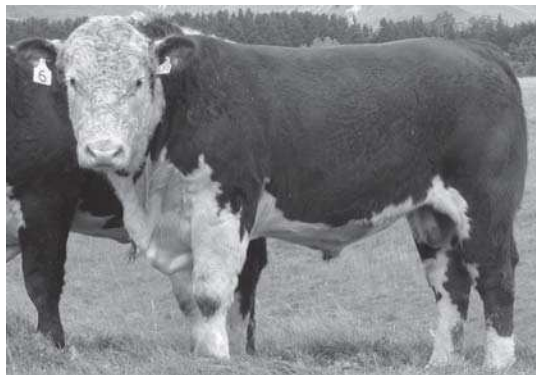
GK MADAME EX 623B

**DAM:** TE TAUMATA CYNTHIA 78

TE TAUMATA EMPEROR

TE TAUMATA CYNTHIA 67

TE TAUMATA CYNTHIA 54



Comment: Titan has very good loin and top muscle expression, typical of how well his sire, Te Taumata Premier, has bred.

*Purchaser:* .....

*Price:* .....

# TE TAUMATA TUNDRA 03678

## LOT 7

BORN: 18 July 2003

Tag No.: 678

### 2005 GROUP BREEDPLAN EBVs

|          | Birth Wt. | 200 Day Gro. | 400 Day Gro. | 600 Day Gro. | Milk | EMA | Rib  | Rump | Carcass Wt. | Scrotal Circ. (cm) | Wt (kg) |
|----------|-----------|--------------|--------------|--------------|------|-----|------|------|-------------|--------------------|---------|
| E.B.V.   | 7.6       | 36.0         | 55.0         | 74.0         | 12.0 | 1.6 | -0.3 | -0.5 | 42.0        |                    |         |
| Accuracy | 74%       | 71%          | 69%          | 70%          | 48%  | 45% | 55%  | 55%  | 58%         | 38                 | 826     |

RLOA R271 DYNASTY 37U

JSF 37 271 DEVO 23C

JSF 183 VICTORIA

**SIRE:** JSF 23 NIBBS 60G

WTK 120U ENDURO

JSF 128 JJ MICHELLE 24B

JSF 90 LADY FORCE

REMITALL ACE 145A (ET)

TE TAUMATA JILT

TE TAUMATA LYNDA 30

**DAM:** TE TAUMATA WILLDALE 218

TE TAUMATA GARFIELD

TE TAUMATA WILLDALE 180

TE TAUMATA WILLDALE 120



Purchaser: .....

Price: .....

# TE TAUMATA TRENDSETTER 03726

## LOT 8

**BORN: 16 August 2003**

**Tag No.: 726**

### 2005 GROUP BREEDPLAN EBVs

|          | Birth Wt. | 200 Day Gro. | 400 Day Gro. | 600 Day Gro. | Milk | EMA | Rib | Rump | Carcase Wt. | Scrotal Circ. (cm) | Wt (kg) |
|----------|-----------|--------------|--------------|--------------|------|-----|-----|------|-------------|--------------------|---------|
| E.B.V.   | 3.0       | 25.0         | 36.0         | 47.0         | 9.0  | 1.1 | 0.0 | -0.1 | 29.0        |                    |         |
| Accuracy | 73%       | 68%          | 67%          | 68%          | 45%  | 44% | 52% | 52%  | 57%         | 42                 | 770     |

KLONDIKE 707B 15D

4K KFF KAZZ

4K ST CORNUCOPIA 4W

**SIRE:** TE TAUMATA PRESTIGE

WLB REVELATION 67U 23B

TE TAUMATA MINERVA 35

TE TAUMATA MINERVA 21

KILMORLIE DELIVERANCE 80U (ET)

TE TAUMATA EMPEROR

TE TAUMATA BELLE 7

**DAM:** TE TAUMATA WILLDALE 196

TE TAUMATA WENTWORTH

TE TAUMATA WILLDALE 150

TE TAUMATA WILLDALE 114



*Purchaser:* .....

*Price:* .....

# TE TAUMATA TROY 03696

## LOT 9

BORN: 27 July 2003

Tag No.: 696

### 2005 GROUP BREEDPLAN EBVs

|          | Birth Wt. | 200 Day Gro. | 400 Day Gro. | 600 Day Gro. | Milk | EMA | Rib | Rump | Carcass Wt. | Scrotal Circ. (cm) | Wt (kg) |
|----------|-----------|--------------|--------------|--------------|------|-----|-----|------|-------------|--------------------|---------|
| E.B.V.   | 3.5       | 18.0         | 27.0         | 44.0         | 6.0  | 2.0 | 0.2 | 0.2  | 25.0        |                    |         |
| Accuracy | 71%       | 69%          | 66%          | 68%          | 40%  | 42% | 51% | 51%  | 55%         | 37                 | 760     |

CL 1 DOMINO 563

NJW 563 IDEAL 15D

CIRCLE-D 832W DUCHESS 283Z

**SIRE:** TE TAUMATA MASCOTS 212

TE TAUMATA EMPEROR

TE TAUMATA LEONORA 87-837

TE TAUMATA LEONORA 67

BRONWYN T205-MOCCONA K40 (ET)

TE TAUMATA MAJOR S217

TE TAUMATA BELLE 56

**DAM:** TE TAUMATA BELLE 198

S7R 832W CONTACT ET451E

TE TAUMATA BELLE 147

TE TAUMATA BELLE 84



Purchaser: .....

Price: .....

# TE TAUMATA TROJAN 03756

## LOT 10

BORN: 15 September 2003

Tag No.: 756

### 2005 GROUP BREEDPLAN EBVs

|          | Birth Wt. | 200 Day Gro. | 400 Day Gro. | 600 Day Gro. | Milk | EMA | Rib  | Rump | Carcase Wt. | Scrotal Circ. (cm) | Wt (kg) |
|----------|-----------|--------------|--------------|--------------|------|-----|------|------|-------------|--------------------|---------|
| E.B.V.   | 7.1       | 31.0         | 54.0         | 79.0         | 8.0  | 2.5 | -0.3 | -0.6 | 45.0        | 43                 | 802     |
| Accuracy | 70%       | 65%          | 63%          | 63%          | 41%  | 36% | 44%  | 44%  | 52%         |                    |         |

SQUARE-D APPO TEC 664Y 790B

GHC HIGH TECH 30E

GHC 3R MISS WEST 6T

**SIRE:** TE TAUMATA RUBICON 01513

4K SURVIVOR

TE TAUMATA LYNDA 47

TE TAUMATA LYNDA 31

GK SPECTRUM 823B

TE TAUMATA KING Q992

TE TAUMATA WILLDALE 159

**DAM:** TE TAUMATA LEONORA 126

VENA PARK MUSICMAN\*

WAIHAU LEONORA 249

WAIHAU LEONORA 214



Purchaser: .....

Price: .....

# TE TAUMATA TYCOON 03685

## LOT 11

**BORN: 22 July 2003**

**Tag No.: 685**

### 2005 GROUP BREEDPLAN EBVs

|          | Birth Wt. | 200 Day Gro. | 400 Day Gro. | 600 Day Gro. | Milk | EMA | Rib | Rump | Carcass Wt. | Scrotal Circ. (cm) | Wt (kg) |
|----------|-----------|--------------|--------------|--------------|------|-----|-----|------|-------------|--------------------|---------|
| E.B.V.   | 5.1       | 32.0         | 52.0         | 74.0         | 12.0 | 3.0 | 0.8 | 0.9  | 43.0        |                    |         |
| Accuracy | 73%       | 71%          | 68%          | 70%          | 47%  | 45% | 55% | 55%  | 57%         | 39                 | 820     |

L1 DOMINO 93469

L1 DOMINO 95461

L1 DOMINETTE 880467

**SIRE:** CL 1 DOMINO 888H 1ET

CL 1 DOMINO 828

CL 1 DOMINETTE 178

CL 1 DOMINETTE 3013

KLONDIKE 707B 15D

4K KFF KAZZ

4K ST CORNUCOPIA 4W

**DAM:** TE TAUMATA LEONORA 143

MAGADOR SCULPTOR 46R\*

TE TAUMATA LEONORA 67

TE TAUMATA LEONORA 38



*Purchaser:* .....

*Price:* .....

# TE TAUMATA TROOPER 03682

## LOT 12

BORN: 20 July 2003

Tag No.: 682

### 2005 GROUP BREEDPLAN EBVs

|          | Birth Wt. | 200 Day Gro. | 400 Day Gro. | 600 Day Gro. | Milk | EMA | Rib  | Rump | Carcase Wt. | Scrotal Circ. (cm) | Wt (kg) |
|----------|-----------|--------------|--------------|--------------|------|-----|------|------|-------------|--------------------|---------|
| E.B.V.   | 5.6       | 32.0         | 50.0         | 74.0         | 6.0  | 1.8 | -0.7 | -1.1 | 44.0        |                    |         |
| Accuracy | 72%       | 68%          | 66%          | 68%          | 44%  | 42% | 51%  | 51%  | 55%         | 40                 | 792     |

**SIRE:** TE TAUMATA PATRIOT

4K KFF KAZZ

TE TAUMATA BELLE 105

TE TAUMATA KING Q992

**DAM:** TE TAUMATA BELLE 156

TE TAUMATA BELLE 67

KLONDIKE 707B 15D

4K ST CORNUCOPIA 4W

TE TAUMATA EMPEROR

TE TAUMATA BELLE 44

GK SPECTRUM 823B

TE TAUMATA WILLDALE 159

TE TAUMATA CHARLES

TE TAUMATA BELLE 10

Purchaser: .....

Price: .....

# TE TAUMATA TORONTO 03673

## LOT 13

BORN: 11 July 2003

Tag No.: 673

### 2005 GROUP BREEDPLAN EBVs

|          | Birth Wt. | 200 Day Gro. | 400 Day Gro. | 600 Day Gro. | Milk | EMA | Rib | Rump | Carcass Wt. | Scrotal Circ. (cm) | Wt (kg) |
|----------|-----------|--------------|--------------|--------------|------|-----|-----|------|-------------|--------------------|---------|
| E.B.V.   | 6.0       | 25.0         | 43.0         | 63.0         | 12.0 | 2.6 | 0.7 | 0.8  | 32.0        |                    |         |
| Accuracy | 71%       | 68%          | 65%          | 67%          | 41%  | 40% | 50% | 49%  | 53%         | 39                 | 788     |

**SIRE:** BOYD COW MAKER 0112

**DAM:** TE TAUMATA LYNDA 51

DR ACHIEVER 8403

BOYD FASCINATION Z86

TE TAUMATA MASCOT S212

TE TAUMATA LYNDA 46

KING TEN

DR ERICA 255

OR DOM 549 F243

DL DOMINETTE 59U

NJW 563 IDEAL 15D

TE TAUMATA LEONORA 87-837

TE TAUMATA JUPITER

TE TAUMATA LYNDA 22

Purchaser: .....

Price: .....

# TE TAUMATA TERRAZZO 03738

## LOT 14

BORN: 21 August 2003

Tag No.: 738

### 2005 GROUP BREEDPLAN EBVs

|          | Birth Wt. | 200 Day Gro. | 400 Day Gro. | 600 Day Gro. | Milk | EMA | Rib  | Rump | Carcase Wt. | Scrotal Circ. (cm) | Wt (kg) |
|----------|-----------|--------------|--------------|--------------|------|-----|------|------|-------------|--------------------|---------|
| E.B.V.   | 5.0       | 28.0         | 35.0         | 56.0         | 7.0  | 0.9 | -0.4 | -0.7 | 29.0        |                    |         |
| Accuracy | 70%       | 65%          | 63%          | 65%          | 40%  | 40% | 49%  | 49%  | 53%         | 39                 | 756     |

**SIRE:** TE TAUMATA PATRIARCH

**DAM:** TE TAUMATA WILLDALE 253

TE TAUMATA MAJOR S217

TE TAUMATA WILLDALE 106

4K KFF KAZZ

TE TAUMATA WILLDALE 208

BRONWYN T205-MOCCONA K40 (ET)

TE TAUMATA BELLE 56

MAGADOR SCULPTOR 46R\*

TE TAUMATA WILLDALE 71

KLONDIKE 707B 15D

4K ST CORNUCOPIA 4W

WLB REVELATION 67U 23B

TE TAUMATA WILLDALE 126

Purchaser: .....

Price: .....

# TE TAUMATA THOR 03688

## LOT 15

BORN: 23 July 2003

Tag No.: 688

### 2005 GROUP BREEDPLAN EBVs

|          | Birth Wt. | 200 Day Gro. | 400 Day Gro. | 600 Day Gro. | Milk | EMA | Rib | Rump | Carcass Wt. | Scrotal Circ. (cm) | Wt (kg) |
|----------|-----------|--------------|--------------|--------------|------|-----|-----|------|-------------|--------------------|---------|
| E.B.V.   | 1.3       | 19.0         | 30.0         | 44.0         | 7.0  | 2.7 | 0.7 | 0.7  | 29.0        |                    |         |
| Accuracy | 74%       | 71%          | 69%          | 70%          | 49%  | 45% | 56% | 56%  | 58%         | 39                 | 774     |

L1 DOMINO 93469

L1 DOMINO 95461

L1 DOMINETTE 880467

**SIRE:** CL 1 DOMINO 888H 1ET

CL 1 DOMINO 828

CL 1 DOMINETTE 178

CL 1 DOMINETTE 3013

LCPH P183 CHICAGO 9Y

MARGFRED PARK CHICAGO 25 (ET)

BT ROUNDUP JUNO 538R

**DAM:** TE TAUMATA BELLE 126

TE TAUMATA CAVALIER

TE TAUMATA BELLE 61

TE TAUMATA BELLE 38



Purchaser: .....

Price: .....

# TE TAUMATA TORPEDO 03735

## LOT 16

**BORN: 18 August 2003**

**Tag No.: 735**

### 2005 GROUP BREEDPLAN EBVs

|          | Birth Wt. | 200 Day Gro. | 400 Day Gro. | 600 Day Gro. | Milk | EMA | Rib  | Rump | Carcase Wt. | Scrotal Circ. (cm) | Wt (kg) |
|----------|-----------|--------------|--------------|--------------|------|-----|------|------|-------------|--------------------|---------|
| E.B.V.   | 3.0       | 16.0         | 24.0         | 37.0         | 2.0  | 0.9 | -0.1 | -0.3 | 20.0        |                    |         |
| Accuracy | 70%       | 65%          | 63%          | 65%          | 37%  | 38% | 47%  | 47%  | 52%         | 40                 | 722     |

BRONWYN T205-MOCCONA K40 (ET)

TE TAUMATA MAJOR S217

TE TAUMATA BELLE 56

**SIRE:** TE TAUMATA PATRIARCH

MAGADOR SCULPTOR 46R\*

TE TAUMATA WILLDALE 106

TE TAUMATA WILLDALE 71

TE TAUMATA JASPER

TE TAUMATA LETHAL R85

TE TAUMATA LEONORA 98

**DAM:** TE TAUMATA WILLDALE 254

REMITALL ACE 145A (ET)

TE TAUMATA WILLDALE 189

TE TAUMATA WILLDALE 79



*Purchaser:* .....

*Price:* .....

# TE TAUMATA TRITON 03679

## LOT 17

BORN: 19 July 2003

Tag No.: 679

### 2005 GROUP BREEDPLAN EBVs

|          | Birth Wt. | 200 Day Gro. | 400 Day Gro. | 600 Day Gro. | Milk | EMA | Rib  | Rump | Carcass Wt. | Scrotal Circ. (cm) | Wt (kg) |
|----------|-----------|--------------|--------------|--------------|------|-----|------|------|-------------|--------------------|---------|
| E.B.V.   | 5.1       | 26.0         | 47.0         | 66.0         | 4.0  | 1.7 | -0.6 | -1.0 | 36.0        |                    |         |
| Accuracy | 71%       | 67%          | 64%          | 66%          | 39%  | 41% | 50%  | 50%  | 53%         | 39                 | 740     |

KLONDIKE 707B 15D

4K KFF KAZZ

4K ST CORNUCOPIA 4W

**SIRE:** TE TAUMATA PATRIOT

TE TAUMATA EMPEROR

TE TAUMATA BELLE 105

TE TAUMATA BELLE 44

TE TAUMATA JASPER

TE TAUMATA LETHAL R85

TE TAUMATA LEONORA 98

**DAM:** TE TAUMATA BELLE 193

ECHO-RIDGE 113U ULTRA 3Z

TE TAUMATA BELLE 111

TE TAUMATA BELLE 53

Purchaser: .....

Price: .....

# TE TAUMATA TASMAN 03707

## LOT 18

**BORN: 05 August 2003**

**Tag No.: 707**

### 2005 GROUP BREEDPLAN EBVs

|          | Birth Wt. | 200 Day Gro. | 400 Day Gro. | 600 Day Gro. | Milk | EMA | Rib | Rump | Carcase Wt. | Scrotal Circ. (cm) | Wt (kg) |
|----------|-----------|--------------|--------------|--------------|------|-----|-----|------|-------------|--------------------|---------|
| E.B.V.   | 5.1       | 22.0         | 41.0         | 56.0         | 11.0 | 2.3 | 0.1 | 0.0  | 35.0        |                    |         |
| Accuracy | 73%       | 71%          | 68%          | 69%          | 48%  | 45% | 55% | 55%  | 58%         | 39                 | 752     |

RLOA R271 DYNASTY 37U

JSF 37 271 DEVO 23C

JSF 183 VICTORIA

**SIRE:** JSF 23 NIBBS 60G

WTK 120U ENDURO

JSF 128 JJ MICHELLE 24B

JSF 90 LADY FORCE

SMITHSTON MACGONAGLE K009ET5

SMITHSTON MIGHTYMAC M033

COORA CORA 139

**DAM:** TE TAUMATA DIANA 178

GRAYSTONE STLEDGER\*

TE TAUMATA DIANA 147

TE TAUMATA DIANA 132



*Purchaser:* .....

*Price:* .....

# TE TAUMATA TOMAHAWK 03753

## LOT 19

BORN: 11 September 2003

Tag No.: 753

### 2005 GROUP BREEDPLAN EBVs

|          | Birth Wt. | 200 Day Gro. | 400 Day Gro. | 600 Day Gro. | Milk | EMA | Rib  | Rump | Carcass Wt. | Scrotal Circ. (cm) | Wt (kg) |
|----------|-----------|--------------|--------------|--------------|------|-----|------|------|-------------|--------------------|---------|
| E.B.V.   | 4.3       | 34.0         | 48.0         | 68.0         | 9.0  | 1.8 | -0.2 | -0.4 | 41.0        |                    |         |
| Accuracy | 73%       | 68%          | 66%          | 67%          | 44%  | 44% | 51%  | 51%  | 56%         | 38                 | 720     |

**SIRE:** TE TAUMATA PREMIER

**DAM:** TE TAUMATA BELLE 158

4K KFF KAZZ

TE TAUMATA BELLE 104

4K SURVIVOR

TE TAUMATA BELLE 105

KLONDIKE 707B 15D

4K ST CORNUCOPIA 4W

TE TAUMATA EMPEROR

TE TAUMATA BELLE 65

GK SPORTSMAN 41Y

GK MADAME EX 623B

TE TAUMATA EMPEROR

TE TAUMATA BELLE 44

Purchaser: .....

Price: .....

# TE TAUMATA TENNESSEE 03730

## LOT 20

BORN: 18 August 2003

Tag No.: 730

### 2005 GROUP BREEDPLAN EBVs

|          | Birth Wt. | 200 Day Gro. | 400 Day Gro. | 600 Day Gro. | Milk | EMA | Rib | Rump | Carcase Wt. | Scrotal Circ. (cm) | Wt (kg) |
|----------|-----------|--------------|--------------|--------------|------|-----|-----|------|-------------|--------------------|---------|
| E.B.V.   | 4.8       | 24.0         | 44.0         | 61.0         | 5.0  | 1.9 | 0.0 | -0.2 | 38.0        |                    |         |
| Accuracy | 71%       | 67%          | 64%          | 67%          | 42%  | 41% | 50% | 50%  | 53%         | 41                 | 754     |

KLONDIKE 707B 15D

4K KFF KAZZ

4K ST CORNUCOPIA 4W

SIRE: TE TAUMATA PATRIOT

TE TAUMATA EMPEROR

TE TAUMATA BELLE 105

TE TAUMATA BELLE 44

GK SPECTRUM 823B

TE TAUMATA KING Q992

TE TAUMATA WILLDALE 159

DAM: TE TAUMATA BELLE 182

FREELANCE QUEBEC

TE TAUMATA BELLE 79

TE TAUMATA BELLE 10

Purchaser: .....

Price: .....

# TE TAUMATA TUNGSTEN 03698

## LOT 21

BORN: 30 July 2003

Tag No.: 698

### 2005 GROUP BREEDPLAN EBVs

|          | Birth Wt. | 200 Day Gro. | 400 Day Gro. | 600 Day Gro. | Milk | EMA | Rib | Rump | Carcass Wt. | Scrotal Circ. (cm) | Wt (kg) |
|----------|-----------|--------------|--------------|--------------|------|-----|-----|------|-------------|--------------------|---------|
| E.B.V.   | 3.1       | 15.0         | 23.0         | 33.0         | 13.0 | 1.7 | 0.3 | 0.3  | 20.0        |                    |         |
| Accuracy | 72%       | 68%          | 65%          | 67%          | 43%  | 40% | 50% | 50%  | 54%         | 39                 | 708     |

**SIRE:** BOYD COW MAKER 0112

**DAM:** TE TAUMATA BELLE 196

DR ACHIEVER 8403

BOYD FASCINATION Z86

TE TAUMATA MAJOR S217

TE TAUMATA BELLE 85

KING TEN

DR ERICA 255

OR DOM 549 F243

DL DOMINETTE 59U

BRONWYN T205-MOCCONA K40 (ET)

TE TAUMATA BELLE 56

TE TAUMATA EMPEROR

TE TAUMATA BELLE 61

Purchaser: .....

Price: .....

# TE TAUMATA TONTO 03706

## LOT 22

BORN: 05 August 2003

Tag No.: 706

### 2005 GROUP BREEDPLAN EBVs

|          | Birth Wt. | 200 Day Gro. | 400 Day Gro. | 600 Day Gro. | Milk | EMA | Rib | Rump | Carcase Wt. | Scrotal Circ. (cm) | Wt (kg) |
|----------|-----------|--------------|--------------|--------------|------|-----|-----|------|-------------|--------------------|---------|
| E.B.V.   | 3.9       | 24.0         | 35.0         | 51.0         | 7.0  | 1.4 | 0.3 | 0.3  | 26.0        |                    |         |
| Accuracy | 74%       | 69%          | 67%          | 68%          | 45%  | 45% | 53% | 53%  | 57%         | 39                 | 700     |

SIRE: TE TAUMATA PREMIER

DAM: TE TAUMATA LEONORA 123

4K KFF KAZZ

TE TAUMATA BELLE 104

4K SURVIVOR

TE TAUMATA LEONORA 87-837

KLONDIKE 707B 15D

4K ST CORNUCOPIA 4W

TE TAUMATA EMPEROR

TE TAUMATA BELLE 65

GK SPORTSMAN 41Y

GK MADAME EX 623B

TE TAUMATA EMPEROR

TE TAUMATA LEONORA 67

Purchaser: .....

Price: .....

# TE TAUMATA TAMBO 03729

## LOT 23

**BORN: 17 August 2003**

**Tag No.: 729**

### 2005 GROUP BREEDPLAN EBVs

|          | Birth Wt. | 200 Day Gro. | 400 Day Gro. | 600 Day Gro. | Milk | EMA | Rib | Rump | Carcase Wt. | Scrotal Circ. (cm) | Wt (kg) |
|----------|-----------|--------------|--------------|--------------|------|-----|-----|------|-------------|--------------------|---------|
| E.B.V.   | 1.5       | 13.0         | 30.0         | 32.0         | 4.0  | 1.1 | 0.3 | 0.2  | 22.0        |                    |         |
| Accuracy | 72%       | 67%          | 66%          | 67%          | 42%  | 43% | 52% | 52%  | 56%         | 37                 | 706     |

KLONDIKE 707B 15D

4K KFF KAZZ

4K ST CORNUCOPIA 4W

**SIRE:** TE TAUMATA PRESTIGE

WLB REVELATION 67U 23B

TE TAUMATA MINERVA 35

TE TAUMATA MINERVA 21

GK SPECTRUM 823B

TE TAUMATA KING Q992

TE TAUMATA WILLDALE 159

**DAM:** TE TAUMATA LEONORA 135

VLBT JUICE 12Y

TE TAUMATA LEONORA 79

TE TAUMATA LEONORA 68



*Purchaser:* .....

*Price:* .....

# TE TAUMATA TRINIDAD 03704

## LOT 24

BORN: 04 August 2003

Tag No.: 704

### 2005 GROUP BREEDPLAN EBVs

|          | Birth Wt. | 200 Day Gro. | 400 Day Gro. | 600 Day Gro. | Milk | EMA | Rib | Rump | Carcase Wt. | Scrotal Circ. (cm) | Wt (kg) |
|----------|-----------|--------------|--------------|--------------|------|-----|-----|------|-------------|--------------------|---------|
| E.B.V.   | 4.7       | 14.0         | 27.0         | 38.0         | 5.0  | 2.3 | 0.8 | 0.9  | 21.0        |                    |         |
| Accuracy | 73%       | 69%          | 67%          | 69%          | 41%  | 44% | 52% | 52%  | 56%         | 37                 | 696     |

SIRE: TE TAUMATA ORLANDO U387

DAM: TE TAUMATA LEONORA 144

4K SURVIVOR

TE TAUMATA WILLDALE 177

TE TAUMATA LETHAL R85

TE TAUMATA LEONORA 91

GK SPORTSMAN 41Y

GK MADAME EX 623B

TE TAUMATA EMPEROR

TE TAUMATA WILLDALE 133

TE TAUMATA JASPER

TE TAUMATA LEONORA 98

REMITALL ACE 145A (ET)

TE TAUMATA LEONORA 72

Purchaser: .....

Price: .....



# BUYER'S DELIVERY INSTRUCTION SHEET 2005

(No verbal instructions can be accepted)

NOTE: This slip signed by the purchaser must be completed and given to the Sale Office when signing purchaser's invoice.

NAME: ..... TELEPHONE No.: (    ) .....

ADDRESS: .....

..... LOTS PURCHASED: .....

CONSIGN TO: ..... TOTAL No.: .....

ACCOUNT TO: .....

INSURE FOR (State Period): ..... Months

IS LOSS OF USE REQUIRED — Accident — Yes/No

## DELIVERY

FREE IF BULLS UPLIFTED BY 17 JUNE

ALL BULLS MUST BE UPLIFTED BY 24 JUNE

SIGNATURE OF BUYER: .....



# NOTES

# NOTES